



LOIS

Overview

www.softrol.com

Support Information:
<http://Support.Softrol.com>

Table of Contents

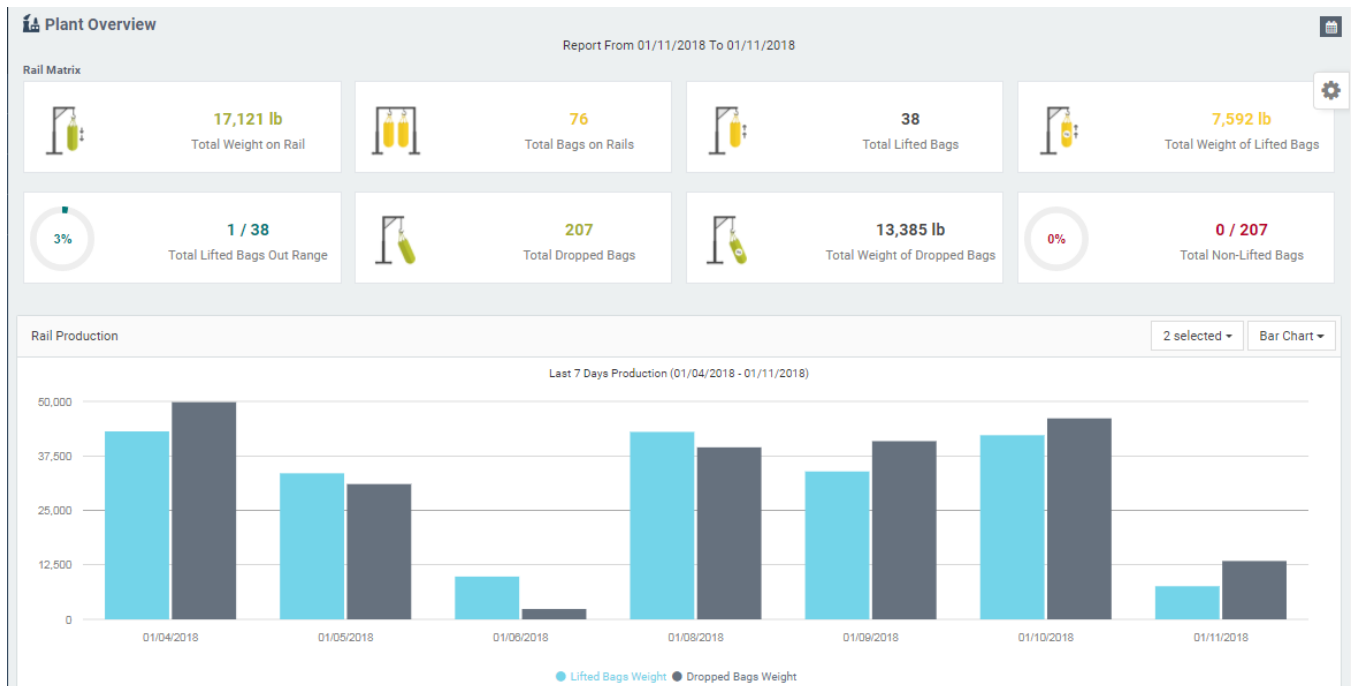
LOIS Introduction	1
Plant Overview	1
Dashboards	2
Reports	3
LOIS Navigation	4
Account Settings	4
LOIS Data	6

LOIS Introduction

Softrol's Laundry Operation Information System (LOIS) enables people throughout your organization to view real-time and historical data anywhere, anytime. This will help improve decision making which may ultimately result in greater profitability. Each part of your laundry managed by Softrol applications gathers information which is consolidated in LOIS. LOIS dashboards allow users to view today's production information at a glance. With drill down capability for date ranges, more extensive reports can be viewed for comparisons and past production performance.

Plant Overview

The Plant Overview provides a high-level overview of the production facility. An authorized user can quickly see information at a corporate level or for a specific plant. The information can be for a single day or a date range. The default date is the current day so a quick overview of today's data can be viewed. Each area of the plant can be quickly assessed to see if there are any areas needing immediate attention. Graphs can be shown for any area within your plant running Softrol applications such as Wash Aisle, Dryer, or Rail Systems.



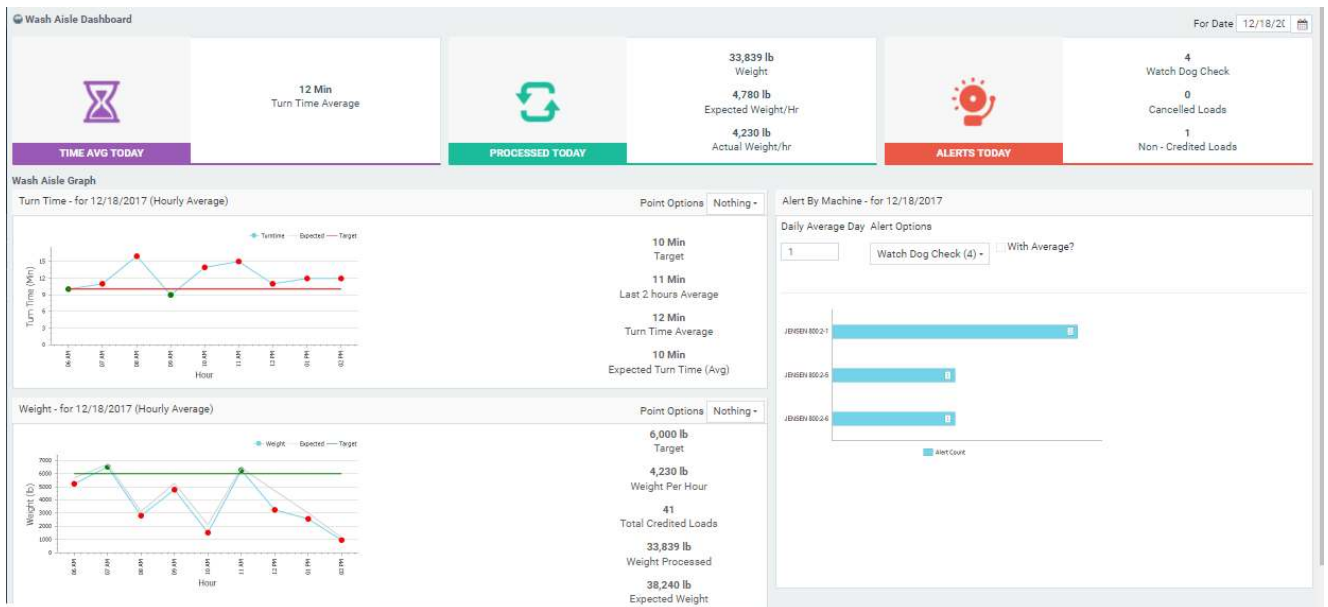
From the Plant Overview screen, a user can drill down for additional information by double clicking on a widget.

Dashboards

Are you looking for more information than is provided in the Overview? This is done by going to My Dashboard and selecting the Dashboard to get specific information on an area of the plant. Multiple Dashboards are available depending on what areas of your laundry are managed by Softrol solutions. The Dashboards provide today's current, actionable information specific to each area of your laundry. Dashboards include:

- Rail
- Wash Aisle
- Dryer
- Garment Sort
- Utility
- Productivity
- Efficiency

Sample Wash Aisle Dashboard:

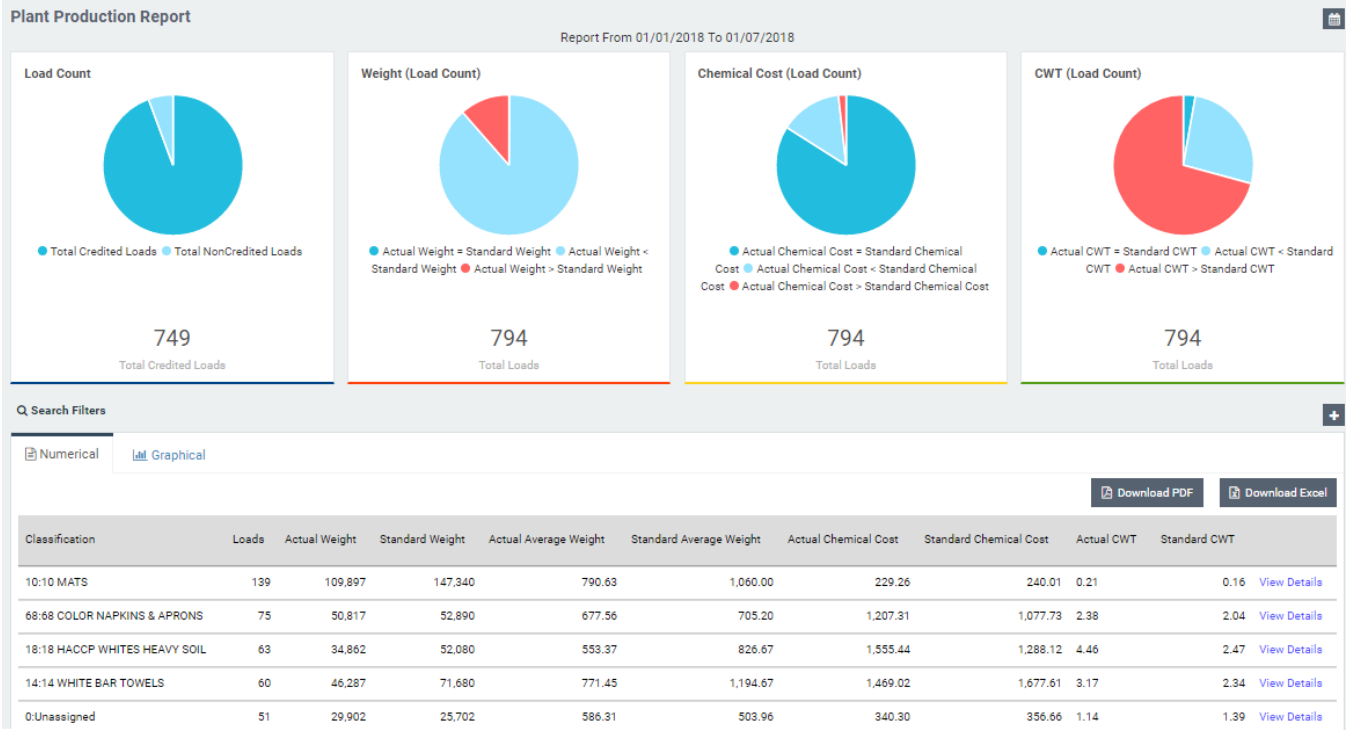


If additional details are needed, the user can go to specific reports.

Reports

Detailed information is available through LOIS Reports for each area of your plant run with a Softrol application. Data collected throughout Softrol solutions is used to provide detailed reports for each area of your facility. These are organized in such a way to answer questions regarding cost, efficiency, production totals and diagnostics. Reports can be seen in graphical or table form. Reports can be highly customized by each user 'on the fly' using various filters and selection criteria they specify. This allows them to see information they need when they need it without having to ask someone else for it. Many can be downloaded in PDF format or to an Excel spreadsheet for further analysis.

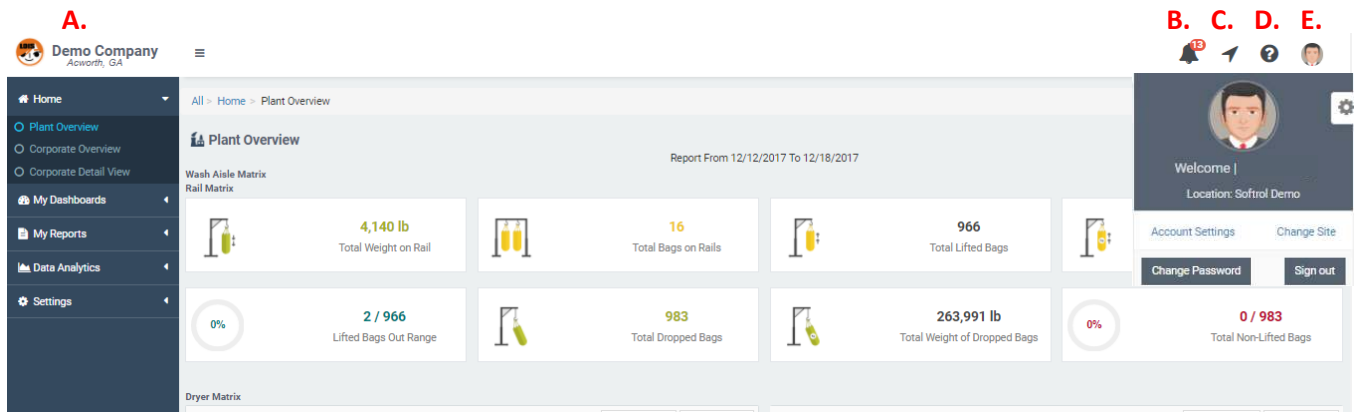
Sample Plant Production Report:



LOIS Navigation

Once your user ID and password are entered in LOIS, you come to your personal Home page.

- A. This identifies which plant location is being viewed
- B. Any notifications are indicated here
- C. Allows you to change location if you are authorized to view multiple facilities
- D. Takes you to LOIS Help
- E. Takes you to your Profile and Account Settings



Account Settings

Account Settings

General

Account Settings allow each user to customize LOIS.

Application

Manage User Name, Email and Password

Alert Notification

Set user default Favorites

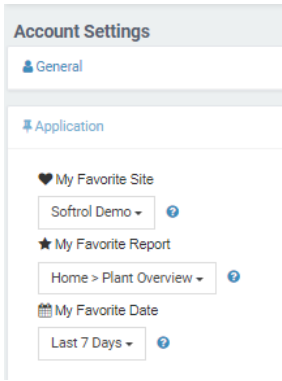
Summary Notification

Set parameters, identify recipients and the reports they are to receive for Alert Notifications

Custom Text Email Notification

Define data range, frequency and recipient(s)

Define when custom email notifications should be sent and who will receive them



The Application tab allows the user to define their Favorites

“My Favorite” are the defaults you set which LOIS remembers to personalize the Plant Location, Report or Dashboard, and Date(s) used on your Home page.

LOIS Data

Any report is only as good as the data behind it. Softrol applications gather a plethora of data and then organizes it in a way that is useful to your organization.

